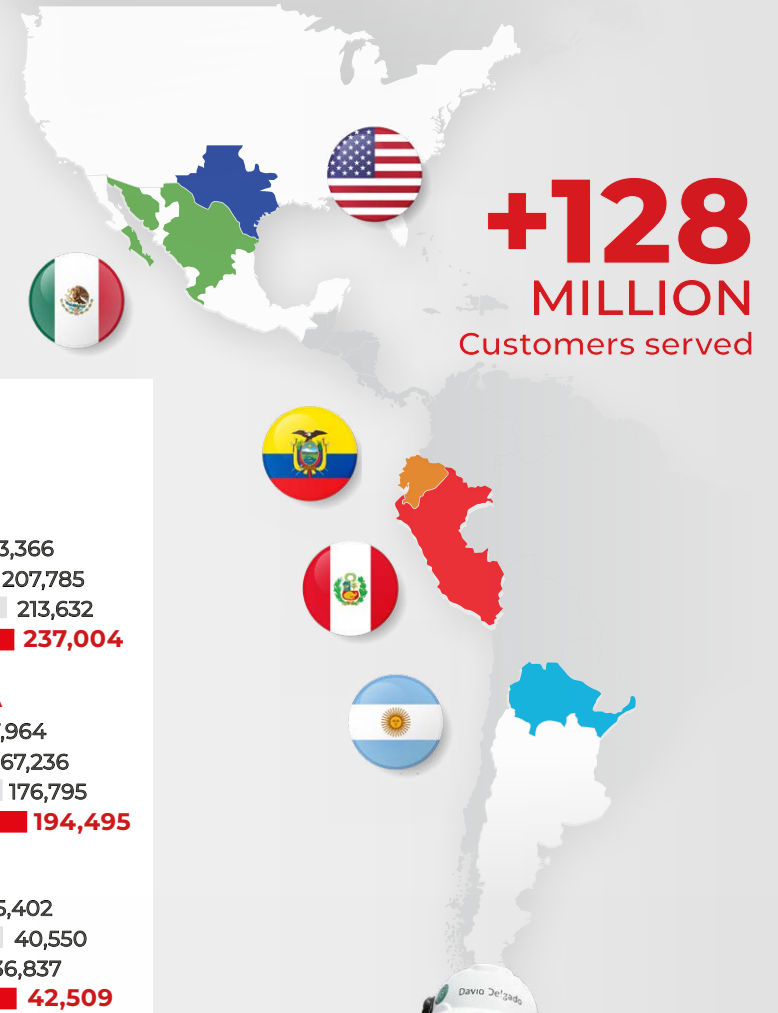




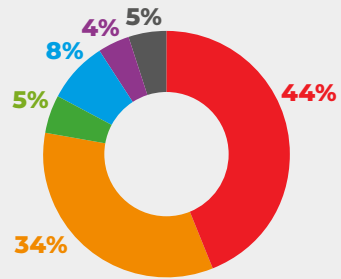
ARCACONTINENTAL

FACTSHEET 2024



Revenues

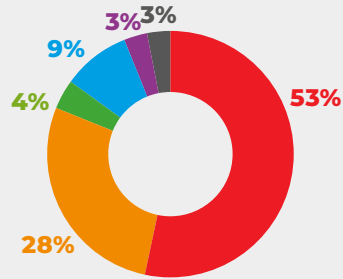
Ps. 237,000 Million



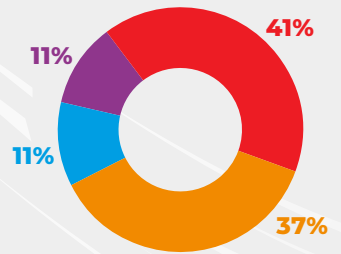
MEXICO USA ECUADOR PERU ARGENTINA SNACKS AND OTHERS

EBITDA

Ps. 49,000 Million

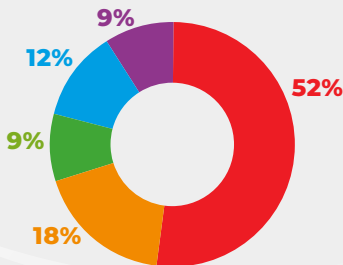


Volume by Distribution Channel



TRADICIONAL ON-PREMISE MODERN OTHERS

Volume by Category



COLAS FLAVORS STILLS WATER JUG

VOLUME

(MUC: MILLION UNIT CASES)

AC



NORTH AMERICA



SOUTH AMERICA



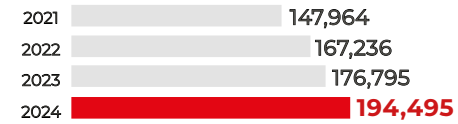
NET SALES

(MILLIONS OF PESOS)

AC



NORTH AMERICA



SOUTH AMERICA



OPERATING DATA



PRODUCTION FACILITIES



DISTRIBUTION CENTERS



PRODUCTION LINES



POPULATION (MILLIONS)



COOLERS (THOUSANDS)



CUSTOMERS (THOUSANDS)



ASSOCIATES (THOUSANDS)

	PRODUCTION FACILITIES	DISTRIBUTION CENTERS	PRODUCTION LINES	POPULATION (MILLIONS)	COOLERS (THOUSANDS)	CUSTOMERS (THOUSANDS)	ASSOCIATES (THOUSANDS)
MEXICO	19	119	89	34	509	359	39
USA	7	31	22	34	120	89	9
ARGENTINA	3	20	18	10	84	71	3
ECUADOR	4	52	39	18	191	195	9
PERU	6	66	28	34	190	358	5
FOOD AND SNACK	6	72	63	-	-	-	6
TOTAL	45	360	259	130	1,094	1,072	70



ESG TARGETS

Priority	Indicator	Unit	GOAL YEAR	GOAL	Performance AC 2024
Water footprint	Efficient water consumption per liter of beverage produced	LA/LB	2026	1.48	1.52
	Efficient use of energy per liter of beverage produced	MJ/LB	2026	0.23	0.243
Reduce the carbon footprint	Percentage of energy use from renewable sources	%	2026	65%	43.33%
	Scope 1 and Scope 2 GHG emissions reduction	%	2030	33.9%	32.59%
Packaging and waste	Percentage of recycled waste from Beverage Production Centers	%	2026	98%	98%
	Percentage of recycled food-grade PET and BioPet containers	%	2030	50%	30.30%

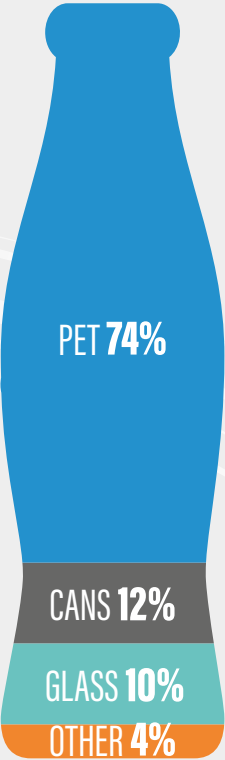
Share Information

Ticker:	AC*
Market Capitalization:	USD 19,000 million
Circulation Shares:	1,698 million
Net Debt/EBITDA	0.4
CAPEX 2025	~7% of total sales

Credit rating	Flitch	Moody's	Standars & Poor's
Long Term Issuer Default Rating	A	A3	NA
Outlook	Stable	Negative	NA
National Long Term Rating	AAA(mex)	AAA.mx	mxAAA
Outlook	Stable	Stable	Stable

Dividend Ratio	
Dividend payout ratio	62%
Pesos/Share in 2024	6.3

Packaging Footprint (Single-serve Units)



+802k CUSTOMERS	+18% ADDITIONAL SKU'S
+93% TRADITIONAL CHANNEL COVERAGE	+1% ORDER FREQUENCY
+67% VOLUME MIX	+11% DROP SIZE

MORE THAN 140 BRANDS AND 1,800 SKU'S



Contacts:

Ulises Fernández de Lara
(81) 8151.1525
Emma Rebeca Pinto Guzmán
(81) 8151.1814
www.arcacontal.com



Arca Continental S.A.B. de C.V.
Buenos Aires

Sustainability
Yearbook Member

S&P Global Corporate Sustainability
Assessment (CSA) Score 2023



2017 Constituent
MSCI Global
Sustainability Indexes



EMPRESA
SOCIALMENTE
RESPONSABLE



SCIENCE
BASED
TARGETS