



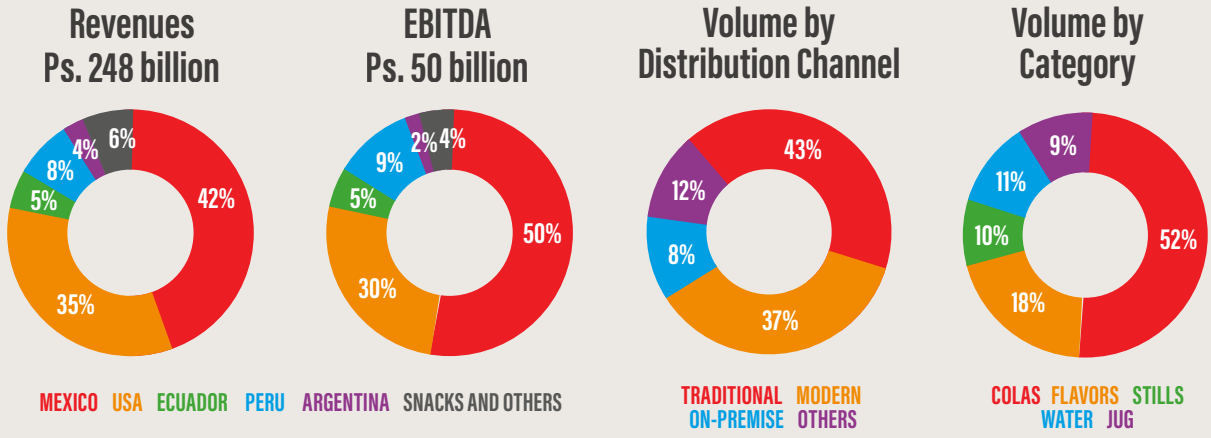
ARCA CONTINENTAL

FACTSHEET 2025



TUALI

+66% VOLUME MIX
+830k CUSTOMERS
+21k YOMP! CUSTOMERS
+100k USERS IN "GANA CON TUALI"



CREDIT RATINGS

	FITCH	MOODY'S	STANDARD & POOR'S
Long Term Issuer Default Rating	A	A3	NA
Outlook	Stable	Stable	NA
National Long Term Rating	AAA(mex)	AAA.mx	mxAAA
Outlook	Stable	Stable	Stable

VOLUME (MUC: MILLION UNIT CASES)

NET SALES (MILLIONS OF PESOS)

Region	Year	Volume (MUC)	Net Sales (Millions of Pesos)
AC	2023	2,474	213,632
	2024	2,466	237,004
	2025	2,415	247,926
NORTH AMERICA	2023	1,828	176,795
	2024	1,855	194,495
	2025	1,803	204,110
SOUTH AMERICA	2023	645	36,837
	2024	610	42,509
	2025	612	43,816

OPERATING DATA

	PRODUCTION CENTERS	DISTRIBUTION CENTERS	PRODUCTION CENTERS	POPULATION (MILLIONS)	COOLERS (THOUSANDS)	CUSTOMERS	ASSOCIATES (THOUSANDS)
MEXICO	19	118	93	34.5	485	358,209	38.6
USA	7	31	21	35.4	108	85,453	10.0
ARGENTINA	3	20	19	10.6	83	69,355	2.7
ECUADOR	4	51	39	19	185	317,782	8.4
PERU	6	64	28	34.4	240	361,250	5.7
FOOD AND SNACKS	6	68	61	0	0	-	6.0
TOTAL	45	352	261	134	1,101	1,192,049	71.4

DIVIDEND RATIO

Dividend payout ratio	75%
Pesos/Share in 2025	8.62

Information as of December 2025

MORE THAN 135 BRANDS AND 1,800 SKU'S



Share Information

Ticker: AC*
 Market Capitalization: USD 20,000 million
 Circulation Shares: 1,698 million
 Net Debt/EBITDA: 0.7
 CAPEX 2025: -7% of total sales

Information as of May 2026

Contacts:

Daniel Eugenio Odriozola Belden
 (81) 8151.1525
 Emma Rebeca Pinto Guzmán
 (81) 8151.1814
www.arcacontal.com

Arca Continental S.A.B. de C.V. Beverages
 Sustainability Yearbook Member
 S&P Global Corporate Sustainability Assessment (CSA) Score 2023

MSCI 2017 Constituent MSCI Global Sustainability Indexes

ESR EMPRESA SOCIALMENTE RESPONSABLE

SCIENCE BASED TARGETS